



# STUB END INOXIDABLE A403 WP304L SCH 10S/40S

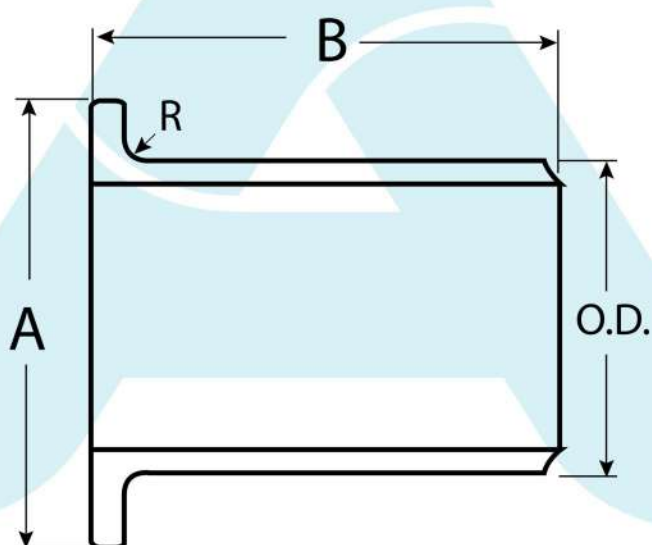
## CARACTERÍSTICAS DEL PRODUCTO

ANSI B16.9

MATERIAL: ACERO INOXIDABLE ASTM A403

304L Y 316L

CEDULA: SCH 10S , SCH 40S



## DIMENSIONES

MEDIDA	DIÁMETRO EXTERIOR (OD)	DIÁMETRO DE LAP (A)	RADIO DE EMPALME (R)	LARGO (B)	PESO (Kg)	
					SCH 10	SCH 40
1/2"	0.84	1.5	0.12	2.00	0.08	0.14
3/4"	1.05	1.12	0.12	2.00	0.09	0.18
1"	1.32	1.5	0.12	2.00	0.14	0.29
1 1/4"	1.66	1.88	0.19	2.00	0.2	0.41
1 1/2"	1.9	0.2	0.25	2.00	0.25	0.56
2"	2.38	3	0.31	2.50	0.38	1
2 1/2"	2.88	3.75	0.31	2.50	0.47	1.6
3"	3.5	4.5	0.38	2.50	0.72	2.1
4"	4.5	6	0.44	3.00	1.1	3
5"	5.56	7.5	0.44	3.00	1.6	5.3
6"	6.62	9	0.50	3.50	2.2	7
8"	8.62	12	0.50	4.00	3.5	10.4
10"	10.75	15	0.50	5.00	5.5	18
12"	12.75	18	0.50	6.00	8.1	22